

INDIAN SCHOOL MUSCAT
FIRST TERM EXAMINATION 2017-2018
SCIENCE - MODEL PAPER

Name: _____

Roll No. ____

Class: V

Time: 2hrs 30min

Max Marks: 80

SECTION 1 (40 Marks)

ATTACH THIS SHEET TO YOUR ANSWER PAPER

Q.1	Fill in the blanks :	(10 x 1 marks)
a.	_____ is the green substance that plants use to prepare their food.	
b.	The thick outer covering of a seed is called _____	
c.	Animals that eat only plants are called _____	
d.	The part of the eye on which the image is formed _____	
e.	The substances that are added to food to prevent spoilage are called _____	
f.	The immediate help given to an injured or sick person is called _____	
g.	The growth of a baby plant from a seed is called _____	
h.	The vertebral column protects the _____	
i.	Device used to put out fire is called a _____	
j.	The bandage used to stop severe bleeding is _____	

Q.2	Choose the correct answer:	(10x1 marks)
a.	Which of the following doesn't have chlorophyll? a. fern b. mango tree c. wheat d. mushroom	
b.	An example of a ball and socket joint is _____ a. ankle b. knee c. hip d. wrist	
c.	The animal that breathe through the moist skin is _____ a. fish b. earthworm c. birds d. grasshopper	
d.	Iodine deficiency can cause _____ a. anaemia b. plague c. goitre d. scurvy	
e.	Moulds reproduce from _____ a. seeds b. spores c. roots d. stem	
f.	The long bone at the centre of the chest. a. sternum b. floating rib c. shoulder d. spinal cord	
g.	The disease spread by insects _____ a. jaundice b. chicken pox c. dengue d. measles	
h.	Animal bites can cause a dangerous disease called _____ a. rabies b. tetanus c. nose bleed d. dysentery	

i.	A fire extinguisher gives out _____ a. carbon dioxide b. kerosene c. oil d. nitrogen
j.	The breaking of a bone is also called as _____ a. sprain b. burn c. blister d. fracture

Q.3	State TRUE or FALSE(5x1 marks)
a.	The hard outer covering on the body of a turtle is called scale.
b.	The back bone consists of only one bone.
c.	Eardrum is seen in the middle ear.
d.	Rice is an energy giving food.
e.	An electric fire should be put off by throwing water over it.

Q.4	Match the following:	(5x 1 marks)
1.	Photosynthesis	a. gills
2.	strawberry	b. migration
3.	winter crop	c. runner
4.	fish	d. rabi
5.	siberian crane	e. carbon dioxide
		f. kharif
ANSWERS : 1. ____ 2. ____ 3. ____ 4. ____ 5. ____		

Q.5	Name the following .(10x 1 marks)
a.	The smallest living part of a living thing.
b.	Baby plant after the germination.
c.	The part of the body that helps a turtle to swim.
d.	The air holes through which the insects breathe in.
e.	The long bone present in the upper half of the leg.
f.	The tough bands of tissues that connect the muscles to the bones.
g.	The coloured part of the eye.
h.	The thick bundle of nerves connected to the brainstem.
i.	Chemicals that kill the insects.
j.	Dead or weak germs given to protect a person from getting diseases.

SECTION 2 (40 Marks)

(Answer these questions on a separate answer sheet)

Q 6 –Q 15 carry 1 mark each

(10x1 marks)

1. Why do animals move from one place to another?
2. Define ligaments.
3. Write down the conditions necessary for germination?
4. What is photosynthesis?
5. Some seeds have spines or hooks on them. Why?
6. Define migration?
7. Write the function of bone marrow.
8. What are reflex actions?
9. What do you mean by a balanced diet?
10. Why should water be not used to put out an electric fire?

Q16 – Q 25 carry 2 marks each

(10x 2 marks)

11. Why is dispersal of seeds necessary? Name any two agents of dispersal.
12. Ostrich is a bird, but it cannot fly. Give reasons.
13. Write any four characteristics that differentiate between a living thing and a non-living thing.
14. How are fins useful to fish?
15. Write any two safety rules to prevent fire.
16. Distinguish between Rabi crops and kharif crops. Write one example for each.
17. What is the difference between infectious diseases and non-infectious diseases?
18. What is the first aid given for nose bleeding?
19. What happens to the ear drum when sound falls on it?
20. What is a joint? Name the joints given below.



Q26 and Q 27 carry 3 marks each.

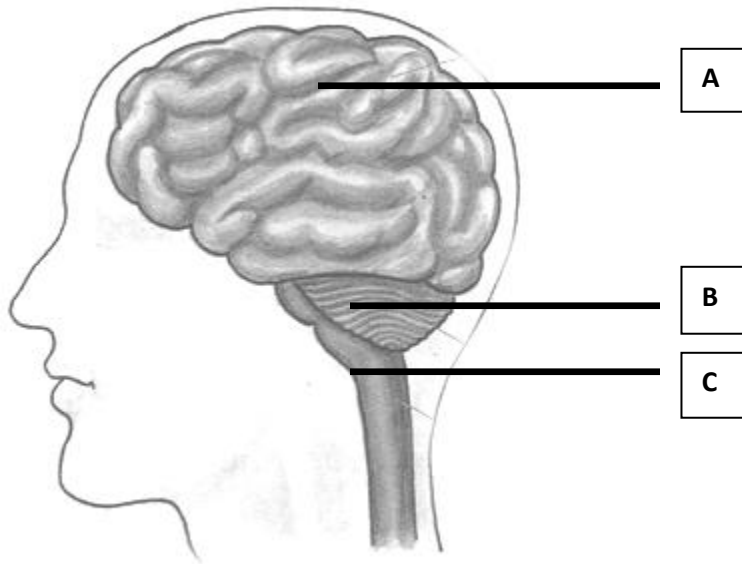
(2 x 3 marks)

- 26. Give TWO differences between voluntary and involuntary muscles? Give an example for each.
- 27. How does malaria spread from one person to another?

Q 28 carries 4 mark

(1 x 4 marks)

28. Label A, B and C in the diagram given below.



i) Write the function of C.
